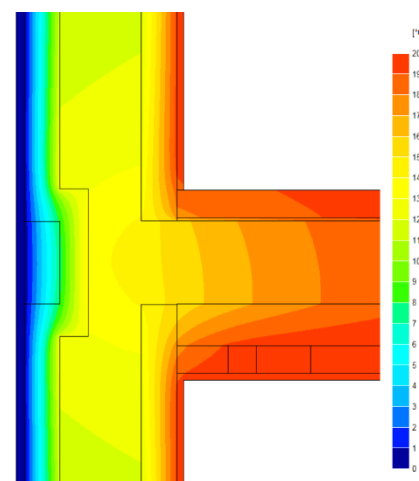
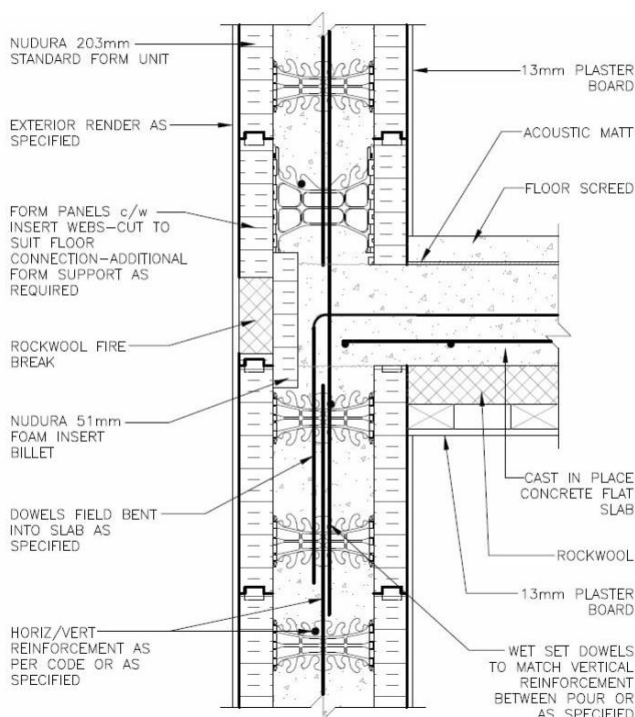


Linear Thermal Transmittance (Ψ) and Temperature Factor (f)



Certificate :	WRTM – 778 CPG E7 vs. 0	Issued:	22 February 2024
Issued to: Stuart Sadler	General Construction Specification: (see detail below for full construction)	Main/Load-bearing:	152mm (nominal) Dense Concrete Core, $\lambda \leq 2.00$
Tremco CPG UK		Insulation:	2x 67mm layers of EPS, $\lambda = 0.036$
Tel: +44 1942 251400		Concrete Floor:	Cast in situ, 6mm acoustic mat, 75mm MW with ceiling below
Email: stuart.sadler@tremcocpg.com		Cladding:	9mm of Render OR 102mm Brick OR other Cladding
Web: www.tremcocpg.com	Description:	ICF Wall, Party Floor, Thermal Break, Between Dwellings (Flats)	
	Reference:	E7	Party Floor with EPS insert 'thermal break', Standard Wall



Temperature Distribution

Linear Thermal Transmittance
W/m.K

$\Psi = 0.086$

**Temperature Factor³ for Humidity
and Mould**

$f = 0.921$

Calculation prepared by: Matthew Wright MA Physics (Oxon) PGCE

Notes: Calculation based upon internal heat loss areas, applicable in UK Building Regulations and SAP calculations
Party values are per dwelling, that is, they have already been halved

- Ψ and f are only valid for the detail drawn and described above.
- The Ψ and f quoted are considered valid for U-value(s) Wall ≤ 0.248 W/m².K (allowance of +/- 20%, following the present guidance from B. Anderson, BRE, correspondence dated 24/02/2012, for the UK market). The use of different claddings may affect the U-value slightly, but will have no material impact on the calculated values used here, in this case.
- In dwellings UK regulations indicate that a temperature factor f that is >0.75 would avoid the risk of mould. For other nations, jurisdictions and climates, other standards may apply. E.g. 0.65; Switzerland: 0.75; Belgium: 0.7; Germany: 0.7; Finland: 0.87. French, German and other standards often do not indicate a single number for acceptable risk, but are dependent on circumstances.
- Calculations have been performed in accordance with:
 - EN ISO 10211: 2017 Thermal bridges in building construction. Heat flows and surface temperatures. Detailed calculations
 - IP 1/06 & BR 497 : 2016 (2nd Edition) Conventions for calculating linear thermal transmittance and temperature factors
 and with reference to the following publications:
 - BS EN ISO 6946 : 2017 Building components and building elements. Thermal resistance and thermal transmittance. Calculation methods
 - BR 443 (2019 Edition) Convention for U-value calculations